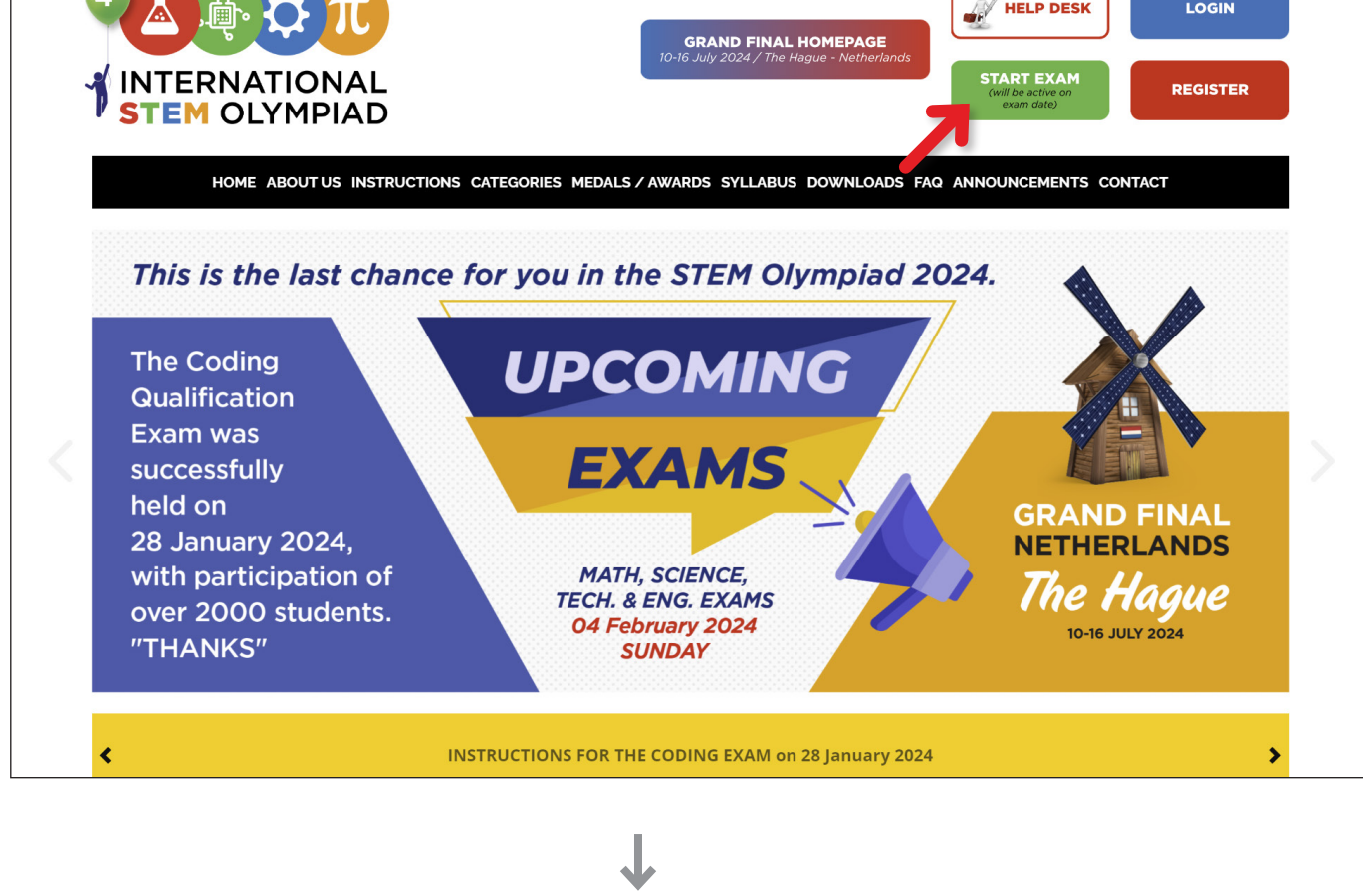


## INSTRUCTIONS FOR THE EXAMS

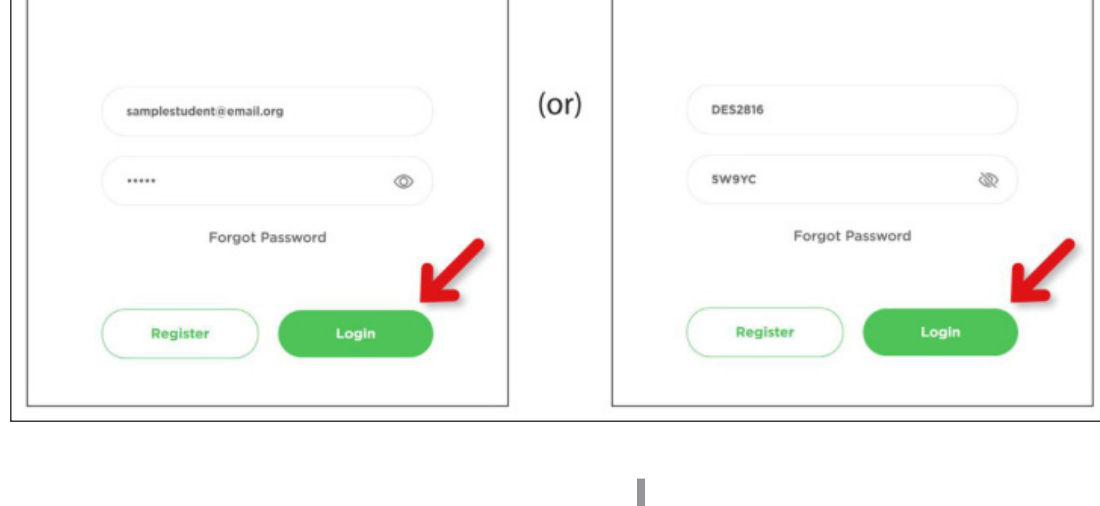
- > All exams will be held via the STEM student panel. No extra links or emails will be sent.
- > Please DO NOT CLICK START EXAM BUTTON if you are not ready.



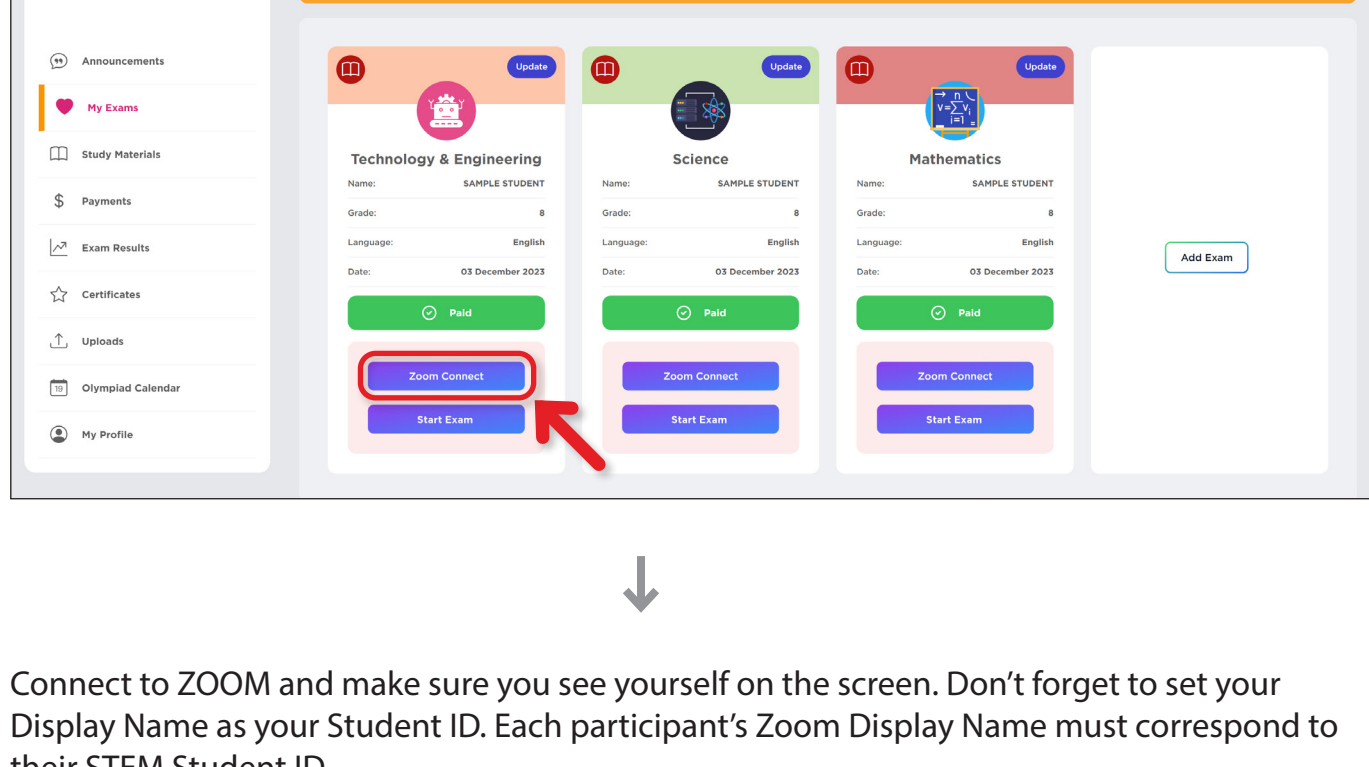
- Visit the <https://stemolympiad.org> website and click on the “**START EXAM**” button.



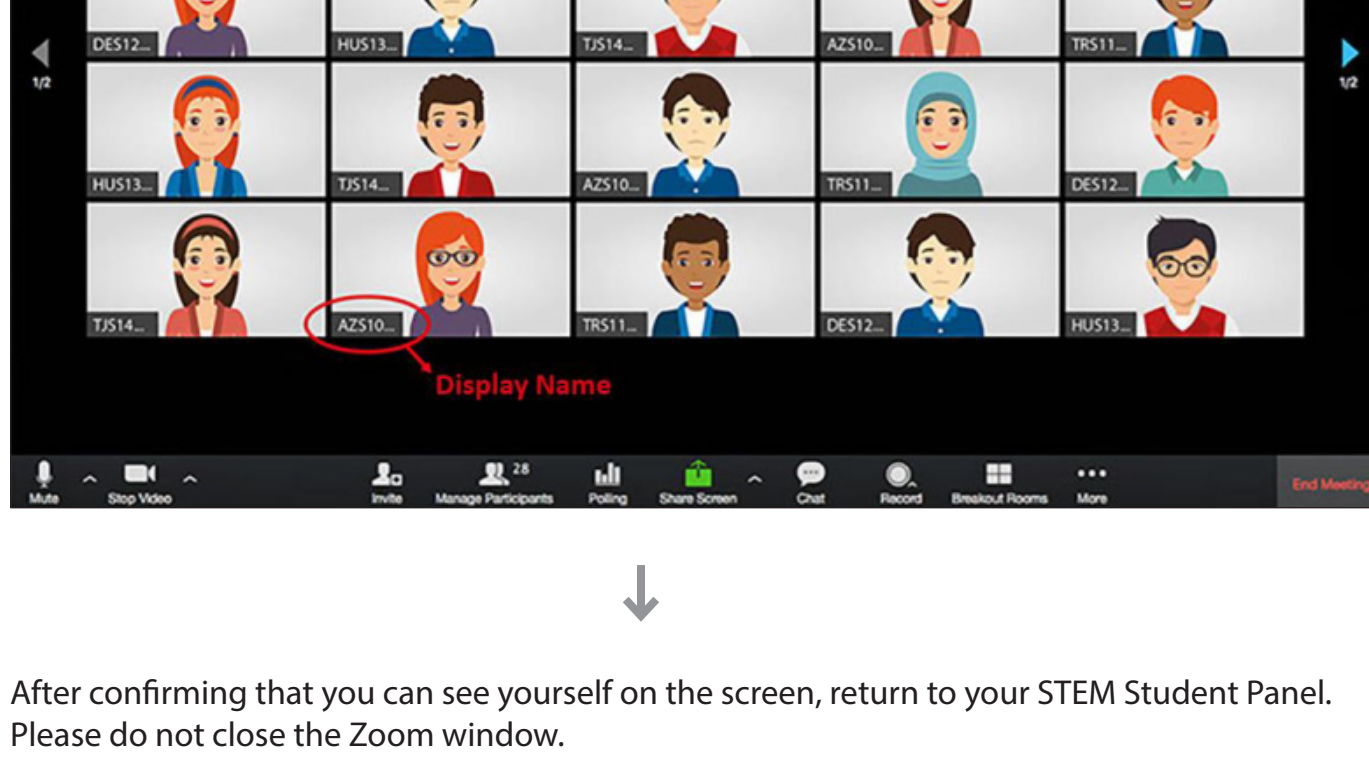
- You can always log in to your student account using either your Student ID and Reference Code or your email address and the password you provided during registration.



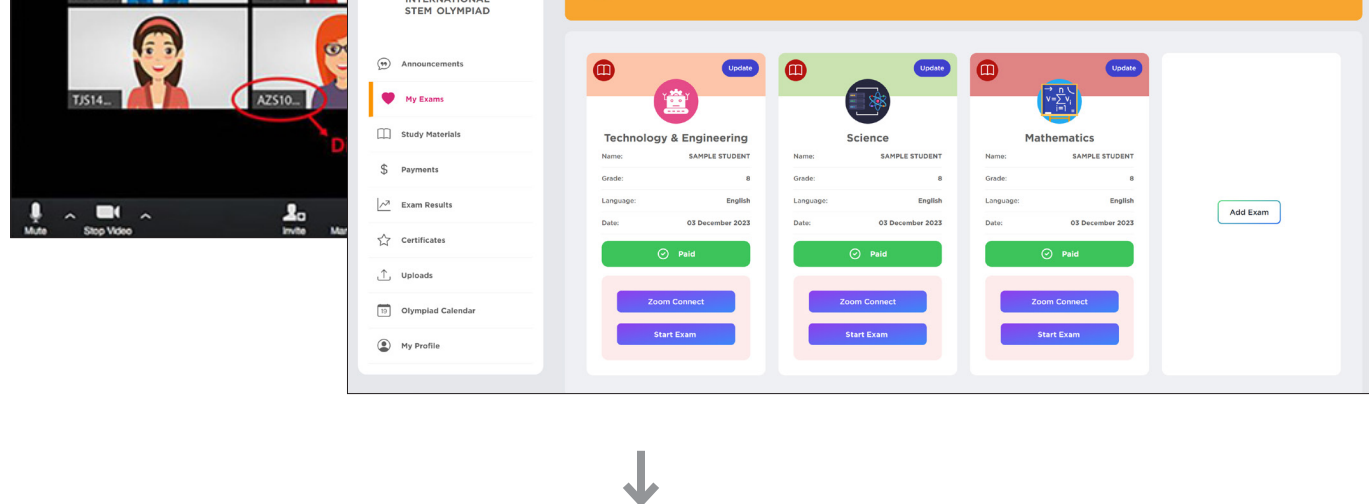
- Click the “**Zoom Connect**” button first to start the Zoom session.



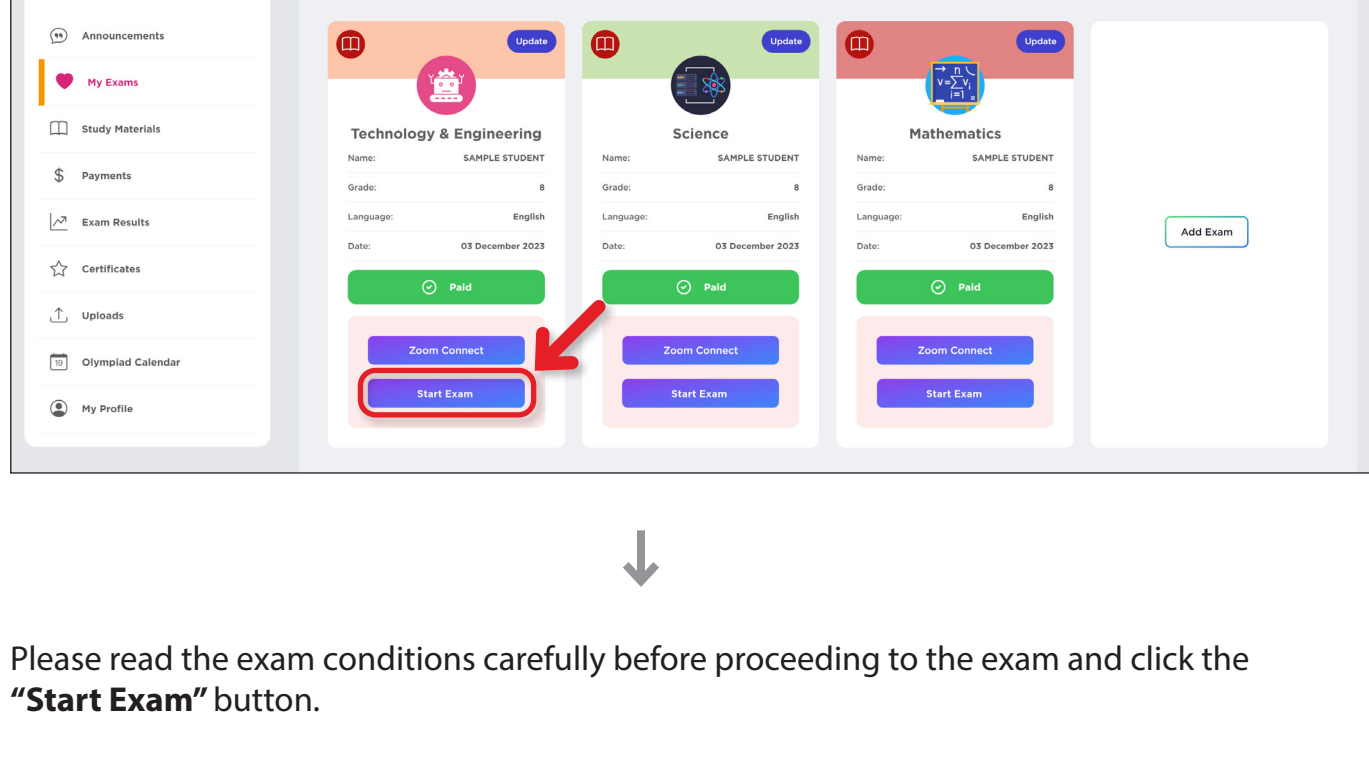
- Connect to ZOOM and make sure you see yourself on the screen. Don't forget to set your Display Name as your Student ID. Each participant's Zoom Display Name must correspond to their STEM Student ID.



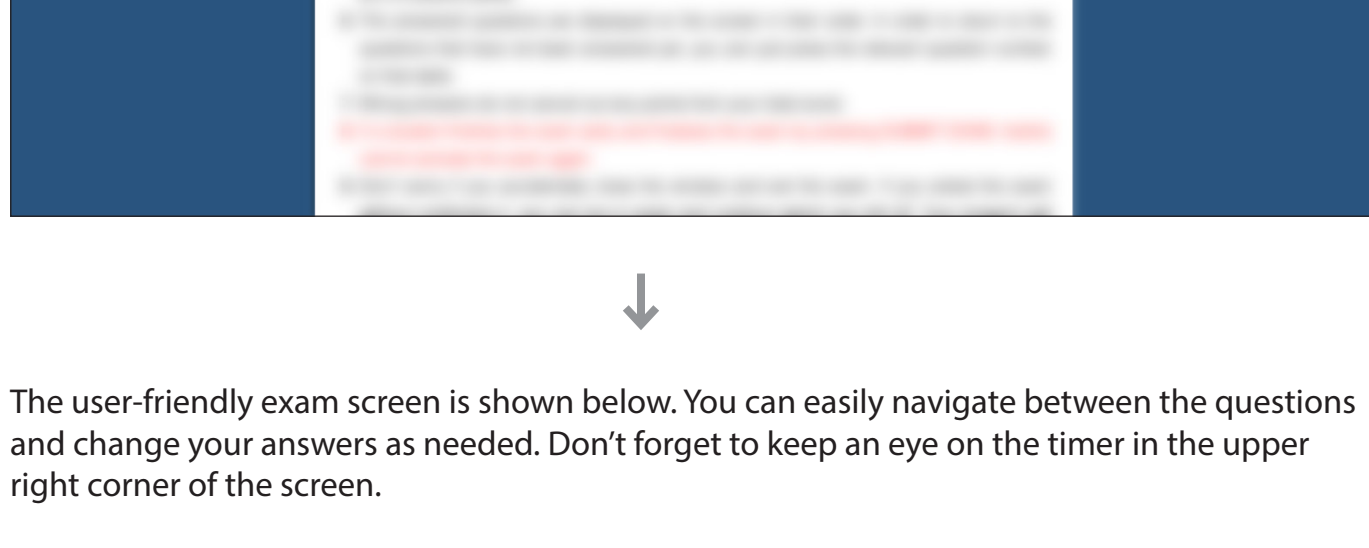
- After confirming that you can see yourself on the screen, return to your STEM Student Panel. Please do not close the Zoom window.



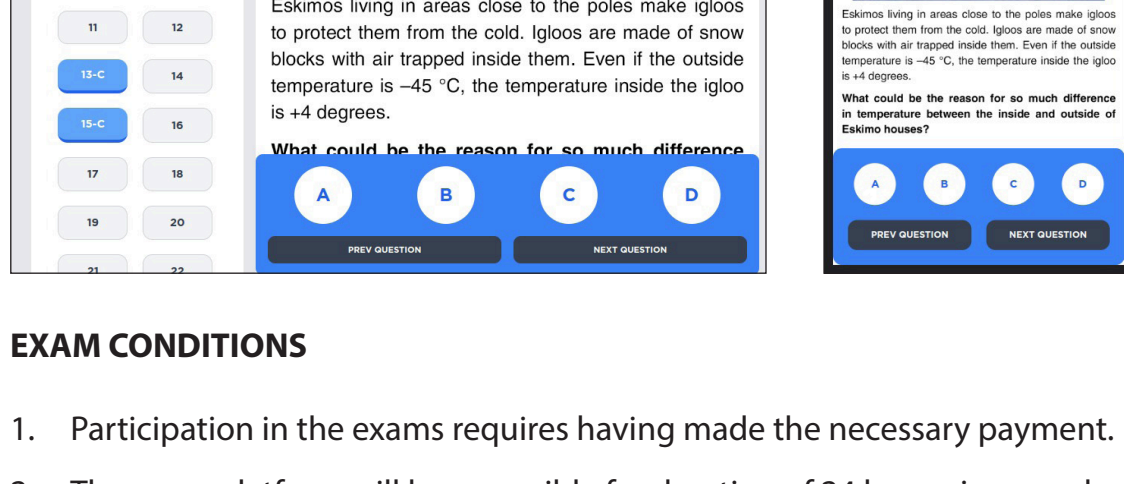
- Click the “**Start Exam**” button to start the Exam.



- Please read the exam conditions carefully before proceeding to the exam and click the “**Start Exam**” button.



- The user-friendly exam screen is shown below. You can easily navigate between the questions and change your answers as needed. Don't forget to keep an eye on the timer in the upper right corner of the screen.



### EXAM CONDITIONS

- Participation in the exams requires having made the necessary payment.
- The exam platform will be accessible for duration of 24 hours, in accordance with the **GMT**.
- All exams will be held via the stem student panel. No extra links or emails will be sent.**
- There are a total of 25 questions to answer.
- The duration of the exam is 60 minutes.
- It is essential to have a functional webcam (internal or external) and a reliable internet connection to connect to Zoom. Each participant's Zoom Display Name must correspond to his/her STEM Student ID.
- Once you start the exam by clicking the **START EXAM** button, **there is no option to pause it.**
- If you accidentally close the window or leave the platform due to a technical issue (such as a power or internet outage), you can log in again through your STEM Student Panel and continue where you left off. However, **time will continue to elapse.**
- Please fill out the **HELP DESK FORM** available on the homepage if you encounter difficulties logging into your STEM Student Panel on the exam day.
- Capturing images of exam questions and sharing them is strictly prohibited.
- The following table shows the evaluation criteria for the Qualification Round and the minimum scores required to advance to the Final Round for each grade level:

GRADES	CATEGORIES			
		MATH	SCIENCE	TECHNOLOGY & ENGINEERING
Grade 1		4 p. or more	4 p. or more	-
Grade 2		4 p. or more	4 p. or more	-
Grade 3		4 p. or more	4 p. or more	-
Grade 4		40 p. or more	40 p. or more	-
Grade 5		48 p. or more	48 p. or more	-
Grade 6		40 p. or more	40 p. or more	32 p. or more
Grade 7		48 p. or more	48 p. or more	40 p. or more
Grade 8		40 p. or more	40 p. or more	48 p. or more
Grade 9		48 p. or more	48 p. or more	32 p. or more
Grade 10		32 p. or more	32 p. or more	40 p. or more
Grade 11		40 p. or more	40 p. or more	48 p. or more
Grade 12		48 p. or more	48 p. or more	-

(\*Each question is worth 4 points)

**Good luck in the exams!**